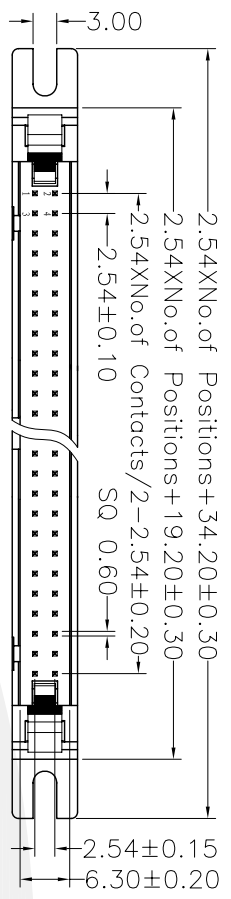
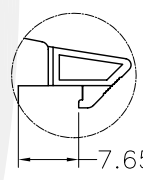


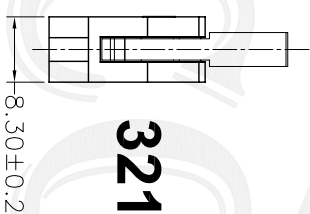
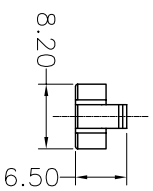
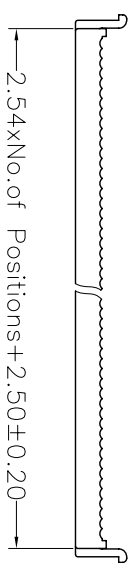
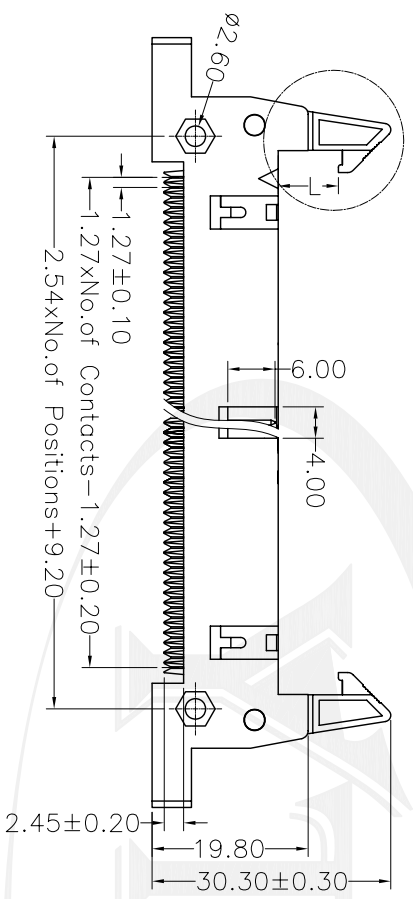
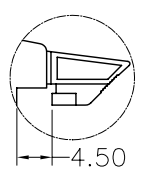
Rev No	Revision note	Date	Signature	Checked
A/0				



Long Latch



Short Latch



3211-XX W XX X X12

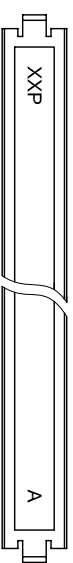
NO. of Pins	
10=10P	14=14P
16=16P	20=20P
26=26P	30=30P
34=34P	40=40P
50=50P	60=60P
64=64P	

Contact Plating	
G0=Gold Flash	G1=3u" Gold
G2=5u" Gold	G3=10u" Gold
G4=15u" Gold	G5=30u" Gold
S0=Gold Flash/Tin	SN=Tin

Color Insulator	
B=Black	U=White
R=Red	Y=Yellow
G=Grey	

Latch Type	
L=Long Latch	S=Short Latch
N=Without Latch	

NOTES:
SPECIFICATION
 Current Rating: 3.0Ampereper Contact
 Contact Resistance: 20Milliohms Max
 Insulation Resistance: 1000Megohms Min
 Dielectric Withstanding Voltage: 1000V AC
 Operation Temperature: -40°C ~ +105°C
Material
 Contact Material: Brass
 Contact Plating: Au or Sn Over Ni
 Insulator Material: Glass Filled Polyester (UL94V-0)
 Standard: PBT



THIS DRAWING IS A CONTROLLED DOCUMENT

DIMENSIONS INCHES TOLERANCES UNLESS OTHERWISE SPECIFIED

0 PLC	± —
1 PLC	± 0.20
3 PLC	± 0.25
4 PLC	± 0.30
ANGLES	± 3°

YTCO YTCO TECHNOLOGY
 HTTP://WWW.YTCO.CO

DATE: OCT.05.2006
 CHK: MIKE
 DATE: OCT.05.2006
 TITLE: 2.54mm IDC Type Ejector Header With Ear
 PART NO.: 3211-XXWXXX12
 DRAWING NO.: YT-3211W1

DMN: JACK	DATE: OCT.05.2006	SCALE: 1:1	SIZE: A4	SHEET: 1 OF 1	REV: A
FILE PATH: 00871					