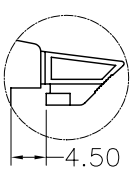
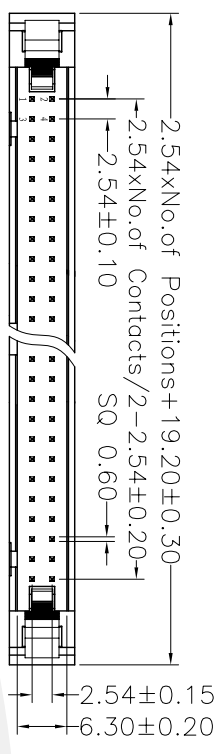
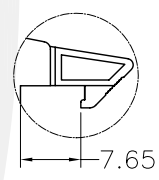


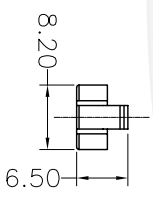
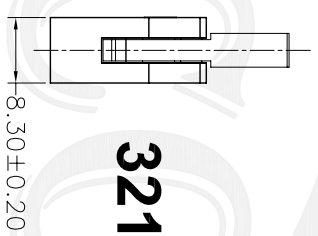
Rev No	Revision note	Date	Signature	Checked
A/0				



Short Latch



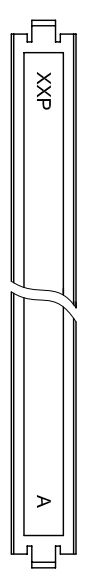
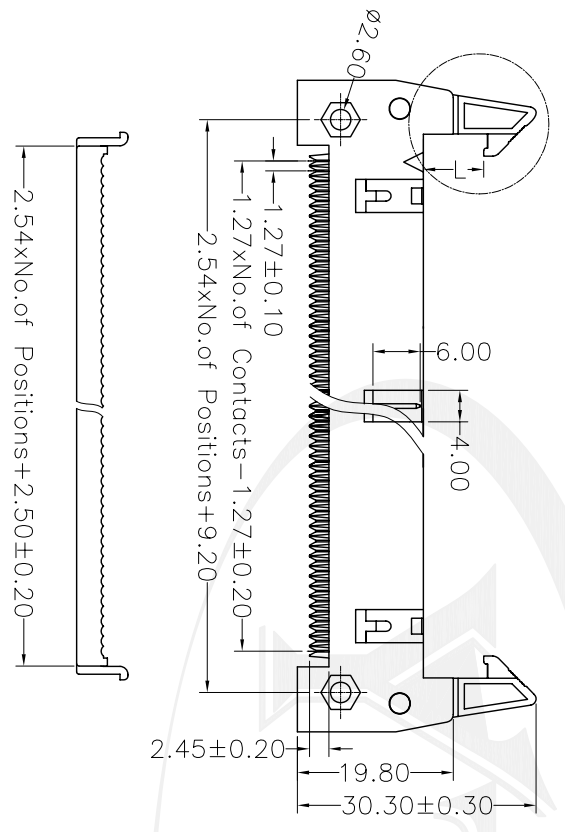
Long Latch



**3211-XX N XX X X12**

<b>NO. of Pins</b> 10=10P 14=14P 16=16P 20=20P 26=26P 30=30P 34=34P 40=40P 50=50P 60=60P 64=64P	<b>Contact Plating</b> G0=Gold Flash G1=3u" Gold G2=5u" Gold G3=10u" Gold G4=15u" Gold G5=30u" Gold S0=Gold Flash/Tin SN=Tin	<b>Color Insulator</b> B=Black W=White U=Blue R=Red Y=Yellow G=Grey	<b>Latch Type</b> L=Long Latch S=Short Latch N=Without Latch
---	--	---	---

**NOTES:**  
**SPECIFICATION**  
 Current Rating: 3.0Ampereper Contact  
 Contact Resistance: 20Milliohms Max  
 Insulation Resistance: 1000Megohms Min  
 Dielectric Withstanding Voltage: 1000V AC  
 Operation Temperature: -40°C ~ +105°C  
**Material**  
 Contact Material: Brass  
 Contact Plating: Au or Sn Over Ni  
 Insulator Material: Glass Filled Polyester (UL94V-0)  
 Standard: PBT



THIS DRAWING IS A CONTROLLED DOCUMENT

<b>DIMENSIONS</b>	<b>TOLERANCES UNLESS OTHERWISE SPECIFIED</b>	<b>0 PLG ± —</b>	<b>1 PLG ± 0.20</b>	<b>2 PLG ± 0.25</b>	<b>3 PLG ± 0.30</b>	<b>4 PLG ± 0.30</b>	<b>ANGLES ± 3°</b>
<b>DMN</b>	<b>DATE</b>	<b>CHK</b>	<b>DATE</b>	<b>APPD</b>	<b>DATE</b>	<b>SIZE</b>	<b>DRAWING NO.</b>
JACK	OCT 05 2006	MIKE	OCT 05 2006	PETER	OCT 05 2006	A4	YT-3211N1
<b>YTCO</b>	<b>YTCO TECHNOLOGY</b>	<b>HTTTP://WWW.YTCO.CO</b>					
<b>2.54mmIDC TypeEjectorHeader WithoutEar</b>	<b>PART NO.</b>	<b>3211-XXNXXXX12</b>					
<b>00871</b>	<b>FILE PATH</b>	<b>YT-3211N1</b>					
<b>1 OF 1</b>	<b>SHEET</b>	<b>REV A</b>					

4

3

2

1