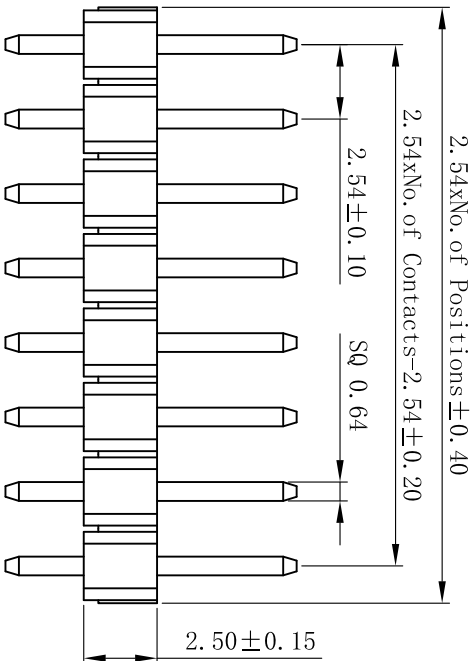


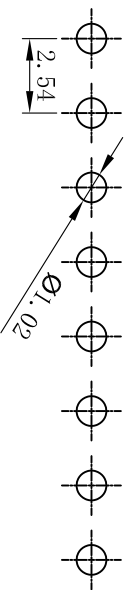
Rev No	Revision note	Date	Signature	Checked
A/0	NEW DRAWING	DEC. 07. 2020		



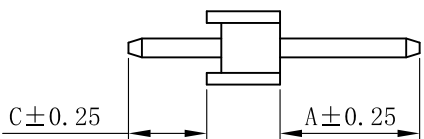
2.54 ± 0.15



2.50 ± 0.15



Recommended P. C. B Layout (Top Side)  
(PCB BOARD TOLERANCE ± 0.05)



Dimension Antitheses List			
ITEM	Pin Length	A	C
Standard	11.50	6.00	3.00
Alternate			

THIS DRAWING IS A CONTROLLED DOCUMENT

DIMENSIONS IN INCHES

TOLERANCES UNLESS OTHERWISE SPECIFIED

OTHERS	TOLERANCES
0 P.I.C	± 0.40
1 P.I.C	± 0.25
2 P.I.C	± 0.15
3 P.I.C	± 0.10
4 P.I.C	± 3°



DATE	DEC. 07. 2020	CHK	KATXUAN, XU
DATE	DEC. 07. 2020	APP	MIKE
DATE	DEC. 07. 2020	DESIGNER	PETER
DATE	DEC. 07. 2020	DATE	DEC. 07. 2020
SCALE	4 : 1	SCALE	4 : 1
SIZE	A4	SIZE	A4
FILE PATH	A/D/YT/COTZ/Pin Header/2.54mm	FILE PATH	A/D/YT/COTZ/Pin Header/2.54mm

**YTCO TECHNOLOGY**  
[HTTP://WWW.YTCO.CO](http://www.ytco.co)

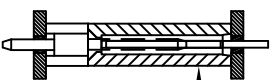
**PH2. 54, SINGLE ROW, S/T, H=2.5**

PART NO. 1125-11XSXXXXXXXXX01  
 DRAWING NO. 1125-11S

SHEET 1 OF 1 REV A

Ordering Code: 1125-11 XX S XX X XXX 0 X 01

No. of Pins	Contact Plating	Insulator Material	Pin Length	Packing
01-40	60=Gold Flash	A=BR-1BRT	L=A+C±2.5	0=PE Bag
	G1=30" Gold	B=BR-1PA6T		A=Tray
	G2=50" Gold	C=BR-PA9T		
	G3=100" Gold	D=BR-LCP		
	G4=150" Gold			
	G5=300" Gold			
	S0=gold(Flash)/Tin			
	SN=Fin			
	SM=alloy tin			



Mating	2134
	2135
	2150
	2157
	2159
	2168
	2171
	2180
	2185
	2111

**Electrical:**  
 Current Rating: 3.0AMP.  
 Contact Resistance: 20mΩ Max.  
 Insulation Resistance: 1000MΩ Min.  
 Withstanding Voltage: 1000V AC/DC.

**Mechanical:**  
 Contact Material: Brass (SQ 0.64mm) .  
 Contact Plating: Au or Sn Over Ni.  
 Insulator Material: Polyester UL94V-0.  
 Standard: PA6T.

**Environmental:**  
 Operating Temp Range: -55°C ~ +125°C with Gold  
 -40°C ~ +105°C with Tin  
 Max. Processing Temp: +230°C for 30~60 Seconds  
 +260°C for 10 Seconds